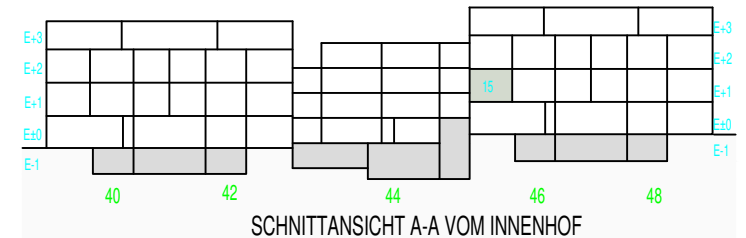
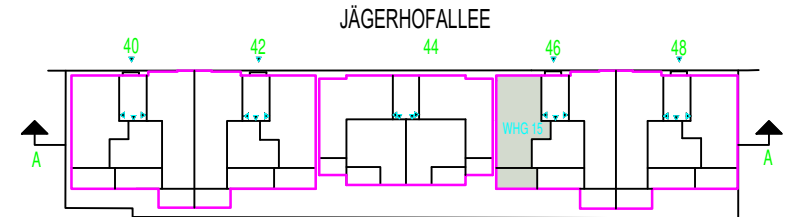
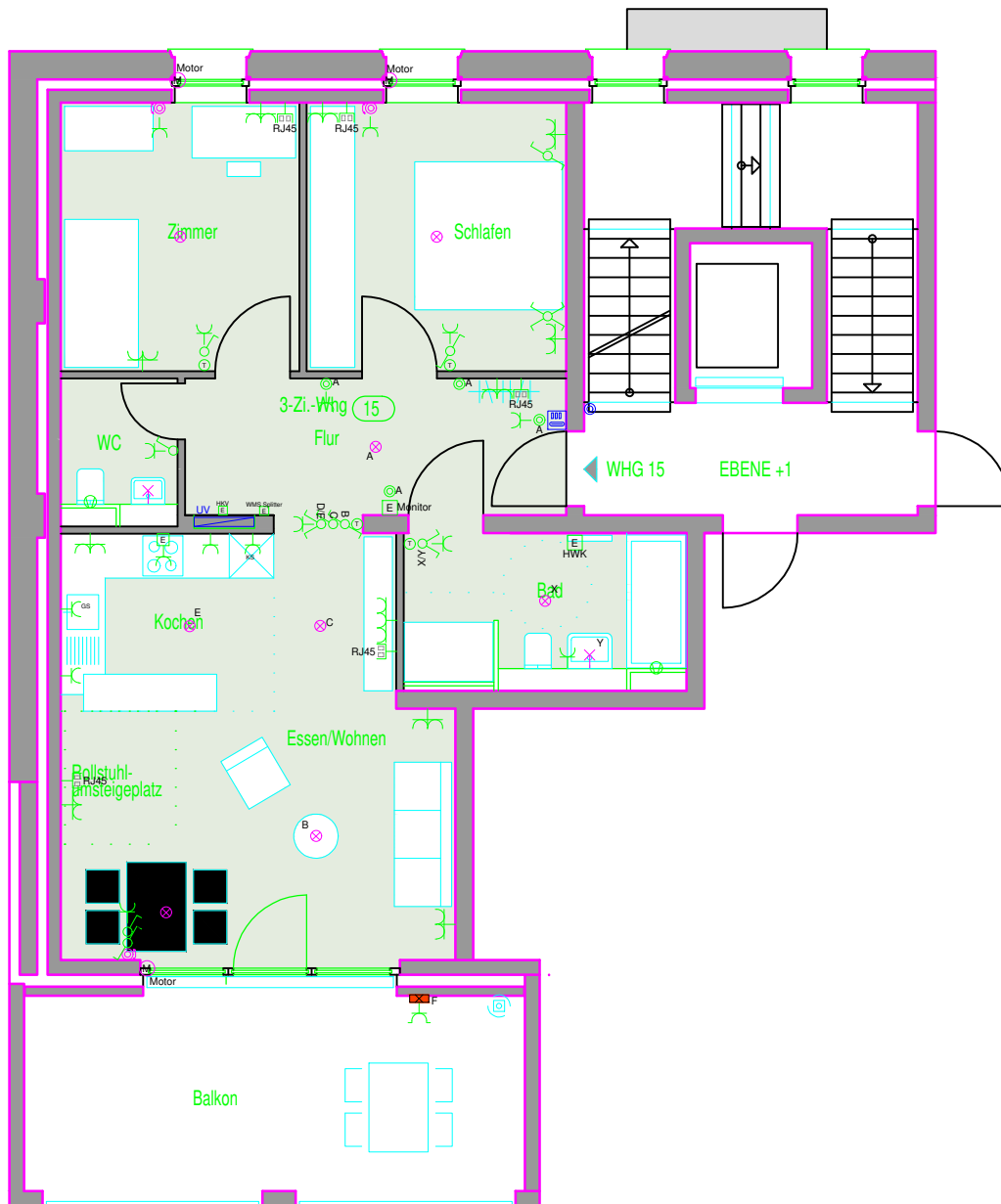


JÄGERHOFALLEE 46 | 71638 LUDWIGSBURG  
 WOHNUNG 15 | EBENE +1  
 BARRIEREFREIE WHG LBO §35

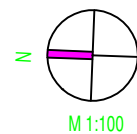


**Wohnfläche Whg 15 - 3  
 Zimmer**

Änderungen vorbehalten. Berechnungen der Flächen nach WoFIV.

Schlafen	12.63 m <sup>2</sup>
Zimmer	11.60 m <sup>2</sup>
WC	2.89 m <sup>2</sup>
Kochen	6.88 m <sup>2</sup>
Wohnen/Essen	22.04 m <sup>2</sup>
Bad	7.51 m <sup>2</sup>
Flur	9.43 m <sup>2</sup>
Balkon 50%	9.32 m <sup>2</sup>

Gesamt 82.30 m<sup>2</sup>



WOHNUNGSBAU  
 LUDWIGSBURG